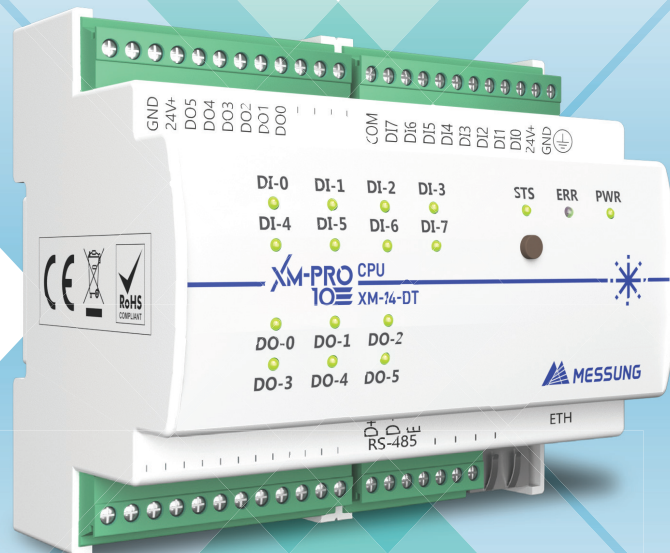


UNMATCHED PERFORMANCE DIVERSE APPLICATIONS REVOLUTIONIZING INDUSTRIAL AUTOMATION

XM-PRO 10



PLC System for Industrial Automation

**MADE IN INDIA.
MADE FOR
THE WORLD.**

**XM-PRO
10**



Messung proudly presents a groundbreaking series of cost-effective PLC controllers, specifically engineered to deliver exceptional performance and user-friendly functionality. Unveiled as part of Messung's visionary 'Navonmesh-Make in India initiative,' XM-PRO 10 sets new standards as a compact, versatile, and fully customizable device. Its capabilities are further enhanced by a comprehensive selection of Local I/O and Remote I/O modules, ensuring effortless expandability.

A NEW BENCHMARK OF **INDUSTRIAL AUTOMATION**

Experience unrivaled versatility and future-proof performance with Messung's XM-PRO 10 PLC system. This cutting-edge automation solution sets new industry standards and caters to diverse sectors. Embrace innovation and propel your operations forward with the XM-PRO 10 PLC system.



INTEGRATED ADVANCED FEATURES

High speed counters
& encoder interface

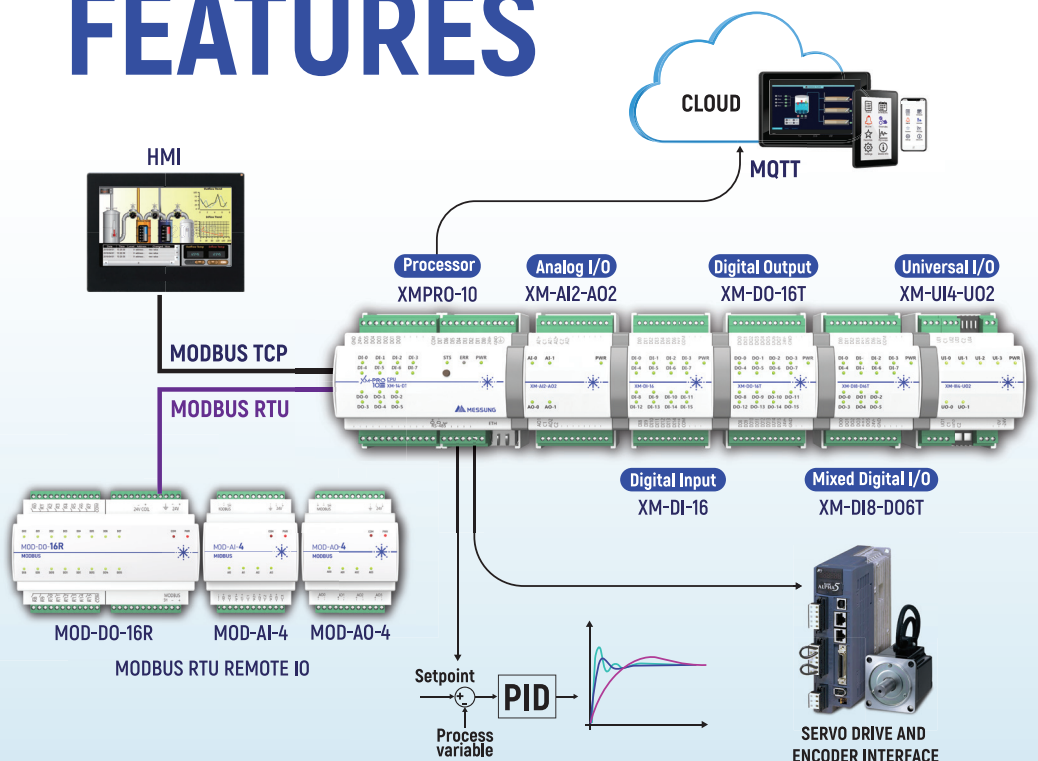
Pulse train output interface

Supports internal PID
configuration*

Cloud connectivity on MQTT

Connectivity of Remote I/Os
on MODBUS

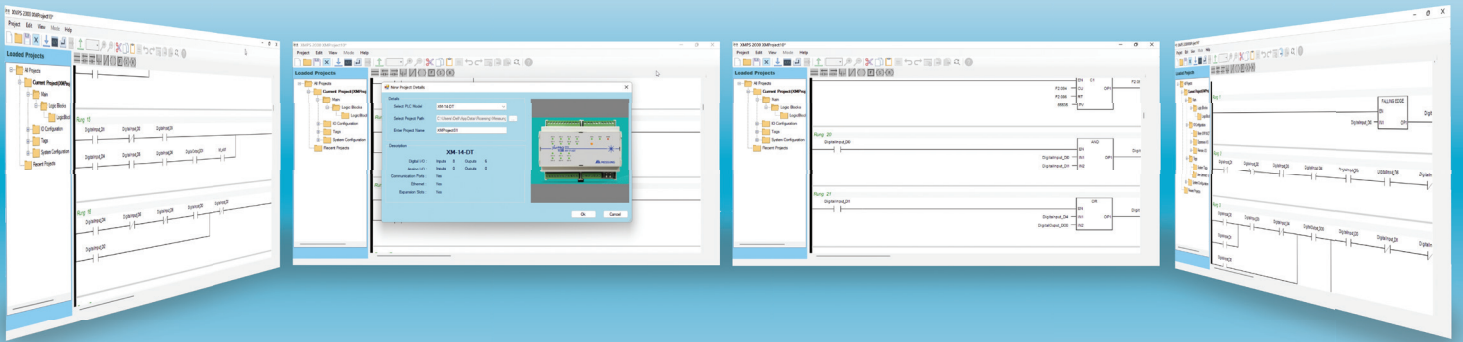
*Coming soon



DESIGNED FOR UTILITY, FLEXIBILITY, COMPATIBILITY.

XMPS-2000
SOFTWARE

- A Windows-based utility
- User friendly environment for better experience with software tools
- Programming flexibility, making it compatible to a varied range of applications
- Online diagnostics functionality for runtime status
- Standard Programming Language LD: Ladder Diagram



WIDE APPLICATIONS. COMPACT SIZE.

Messung's new XM-PRO 10 PLC system can be used for a wide range of small to mid-range applications across industry verticals. This flexible and future-proof industrial automation solution is ideal for Special Purpose Machines, and for Packaging, Labelling, Sorting in the Food Processing industry. The gamut of applications also includes Textile, Chemical, Automobile, Machine Tools, Plastic Moulding, Printing and other industries.



PRODUCT SPECIFICATIONS

Input Power	24VDC
CPU Speed	0.8uS for BOOL instruction and <2.5 uS for WORD instruction
CPU Scan Time	12ms for <=1k statement
Program Memory	256 Kbytes
Retained Memory	0.128kb Bit Memory, 2 kb Word Memory, 1 kb Dword/ Real Memory
I/O Capacity (Base+ Expansion+Remote)	Can be expanded up to 80 I/Os
Expansions	5 unit max.
Digital Inputs	8 channel 24VDC isolated inputs (sink/source)
Analog Inputs	12bit, 0-10v/0-20mA/4-20mA
Digital Outputs	6 channel 24VDC transistor output (500mA per channel)
Analog Outputs	12bit, 0-10v/0-20mA/4-20mA
Fast Digital Inputs	4 channel HSC Inputs, Max. 100Khz
Fast Digital Outputs	2 channel PTO Outputs, Max. 100Khz
Communication Ports	Ethernet, RS485
Protocols	Modbus TCP (Client/Server), Modbus RTU (Master)
Programming Software	XMPS-2000
Certification	CE

XM-PRO CPU VARIANTS

XM-14-DT	XM-PRO PLC Base Unit with 8 ch. 24VDC Inputs & 6 ch. 24VDC Outputs 500mA
XM-17-ADT	XM-PRO PLC Base Unit with 8 ch. 24VDC Inputs & 6 ch. 24VDC Outputs 500mA, 2 ch. Analog Inputs & 1 ch. Analog Output
XM-14DT-HIO	XM-Pro PLC Base unit with 8 ch. 24VDC inputs (4- High speed Inputs max.100Khz) & 6 ch. 24VDC Outputs 500mA (2- High speed Outputs max.100Khz 30mA)

XM-PRO CPU FEATURES

	XM-14DT	XM-17ADT	XM-14DT-HIO
Digital Inputs (DI)	8	8	8
Digital Outputs (DO)	6	6	6*
Analog Inputs V/I (AI)	-	2	-
Analog Outputs V/I (AO)	-	1	-
High Speed Input (HSC)	-	-	4
High Speed Output (PTO)	-	-	2
Ethernet TCP/IP Interface	YES	YES	YES
RS-485 Serial Interface	YES	YES	YES
MQTT Client Interface**	Optional	Optional	Optional

* - 2 High Speed Outputs you can connect as a Source or Sink

** - MQTT Client licence required

LOCAL I/O EXPANSION MODULES

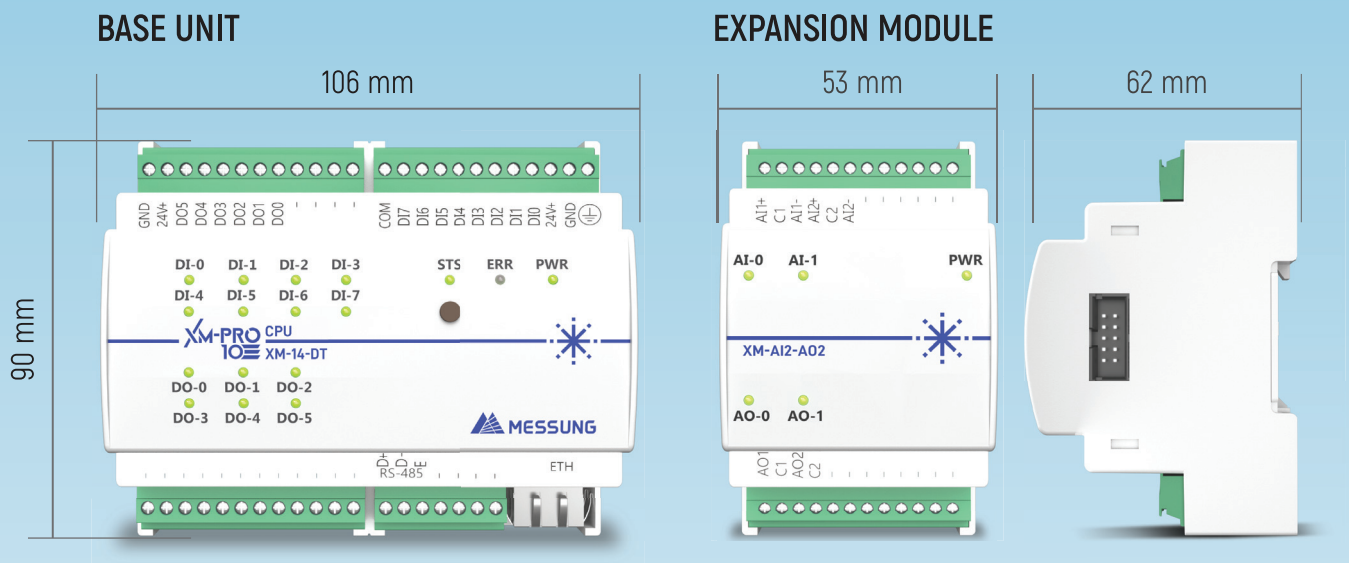
XM-DI-16	16 channel Digital Input, 24VDC sink/source type, 2 groups of 8 channels, optically isolated
XM-DO-16T	16 channel Digital Output, 24VDC source type transistor output (500mA per channel) 1.5A per group 2 groups of 8 channels, optically isolated
XM-DI8-DO6T	8 channel Digital Input, & 6 channel Digital Output, 24VDC sink/source type & 24VDC source type transistor output (500mA per output) 1.5A per group
XM-AI-4	4 channel Analog Input, 12bit (0-10v/0-20mA/4-20mA)
XM-AO-4	4 channel Analog Output, 12bit (0-10v/0-20mA/4-20mA)
XM-AI2-AO2	2 channel Analog Input and 2 channel Analog Output, 12bit (0-10v/0-20mA/4-20mA)
XM-RTD-4	4 channel Analog Input 12bit. (PT100, PT1000, 2 Wire/ 3 Wire)
XM-UI4-UO2	4 channel Universal input (Dry contact,0-10V/0-20mA/4-20mA, Resistance PT100,PT1000,NTC) 2 channel Universal output (12VDC source type transistor output (100mA), 0-10VDC,0-20mA)

REMOTE I/O MODULES

Modbus RTU Protocol with RS485 Communication interface.

MOD-DI-8	8 channel Digital Input, 24VDC sink/source type, 2 groups of 4 channels
MOD-DO-16R	16 channel Relay Output, (250VAC-2A/30VDC-2A), 24VDC. 2 of 8 output channels
MOD-AI-4	4 channel Analog Input, 12bit (0-10v/0-20mA/4-20mA)
MOD-AO-4	4 channel Analog Output, 12bit (0-10v/4-20mA/0-20mA)

DIMENSIONAL DETAILS



MESSUNG SYSTEMS PVT. LTD.

MESSUNG INDUSTRIAL AUTOMATION

501, 502 & 503 Lunkad Sky Vista, Viman Nagar, Pune, India - 411 014.

Contact: +91 20664 92800

www.messungautomation.co.in | info@messung.com

automation & controls
electrical engineering
workplace technology

Process Automation
Servo & Motion Control Automation
General Purpose Automation